

NOW SELLING

Log on to
LUXURY & SPLENDOR @
iPOD COURT
Agboyi- Ketu,
Lagos State.
with

30%
deposit





4-Bedroom maisonettes

N10,000
Application Form

Obtainable from

INTERCONTINENTAL
ENGINEERING & HOMES DEV. LTD.

 Monstreet Bank  Sterling Bank

Ipod Court offers unique opportunity to transform your imagination to enduring fulfillment with the ultra-modern all-inclusive estate in a prime location in Lagos.

Standing on 27 hectares of prime land within Agboyi-Ketu Local Council Development Area, the imposing rows of luxury flats and maisonettes with world class facilities and services offer a taste of paradise on earth.

For enquiries & further information, Contact:



INTERCONTINENTAL
ENGINEERING & HOMES DEV. LTD.

The Penthouse.

9, Hughes Avenue, Alagomeji, Yaba, Lagos, Nigeria.

Office: +234-1-270 4477, 01-765 8023

Mobile: 0816 559 0099, 0802 307 7676.

E-mail: intercontinentalgrp17@gmail.com



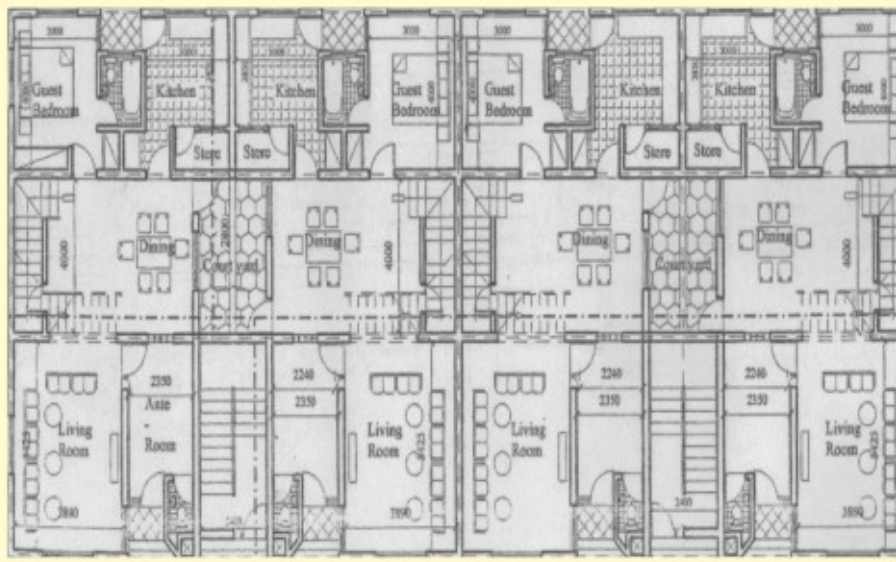
3-Bedroom flats

FINISHING

- * Spacious and well ventilated living room and bedrooms en suite
- * High quality steel outer doors
- * Thick and seasoned panel wooden inner doors
- * High quality kitchen cabinets & wardrobes
- * Ceramic floor and wall tiles

FACILITIES

- * Events Hall, Gymnasium, offices and shops, swimming pool & sports hall.
- * Tarred inner roads with covered drainage and street lights
- * Treated & uninterrupted water supply.
- * Central sewage system
- * Electricity plants that ensure uninterrupted supply
- * Perimeter fencing covering the entire estate
- * 24/7 fool-proof security
- * Ample car parks.



4-Bedroom maisonettes Ground Floor

TOTAL FLOOR SPACE = 129.48 Sqm

Living room - 21.11 Sqm

Ante room - 12.75 Sqm

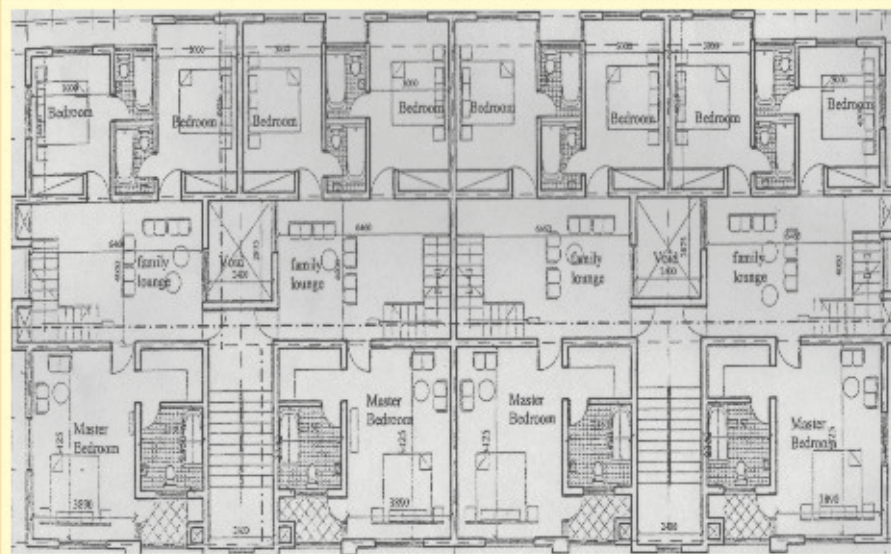
Dinning room - 27.20 Sqm

Guest bed room - 16.84 Sqm (en suite)

Guest toilet - 2.93 Sqm

Kitchen & store - 16.99 Sqm

Court yard - 3.36 Sqm



4-Bedroom maisonettes First Floor

TOTAL FLOOR SPACE = 136.08 Sqm

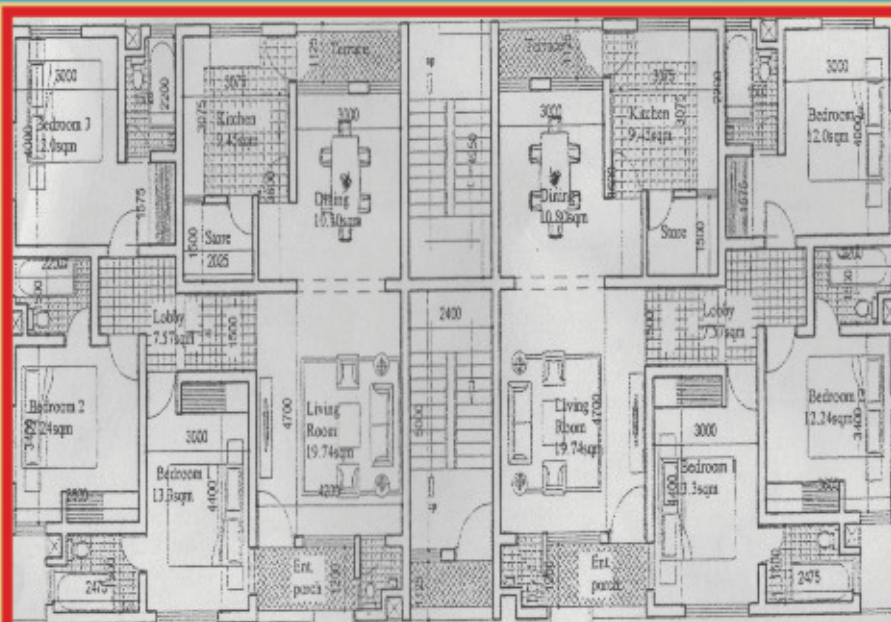
Family lounge - 25.84 Sqm

Bed room 1 - 17.43 Sqm

Bed room 2 - 17.43 Sqm

Master bed room - 42.42 Sqm

• **All Bedrooms en suite**



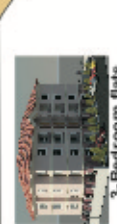
3-Bedroom flats **TOTAL FLOOR SPACE = 144.24 Sqm**

Living room - 19.74 Sqm Dining room - 10.8 Sqm Guest toilet - 3.72 Sqm

Kitchen & store - 12.49 Sqm Bed room 1 - 16.74 Sqm Bed room 2 - 17.54 Sqm

Bed room 3 - 22.58 Sqm • **All Bedrooms en suite**

A Public Private Partnership (PPP) Project



3-Bedroom flats



3-Bedroom flats



4-Bedroom maisonettes

4-Bedroom maisonettes



4-Bedroom maisonettes

4-Bedroom maisonettes

**MORTGAGE
AVAILABLE**
From Bank

POWERED BY



LAGOS STATE GOVT.



AGBOYI-KETU LCDA



INTERCONTINENTAL
ENGINEERING & HOMES DEV. LTD.



YPOD
PROPERTIES LTD.



Mainstreet Bank



Sterling Bank